

How deprived is Leicester?

The English Indices of Deprivation 2015

3 out of 4
Leicester residents
live in the 40% most
deprived areas in
England.

Leicester is ranked
21st most deprived
Local Authority area,
compared to 25th in
2010.

There are fewer
areas in the most
deprived 10% in
England compared
with 2010.

How is deprivation measured?

STEP 1

DATA:
Income, employment, education, health, crime, barriers to services and environment data are collected. These make up the seven domains.

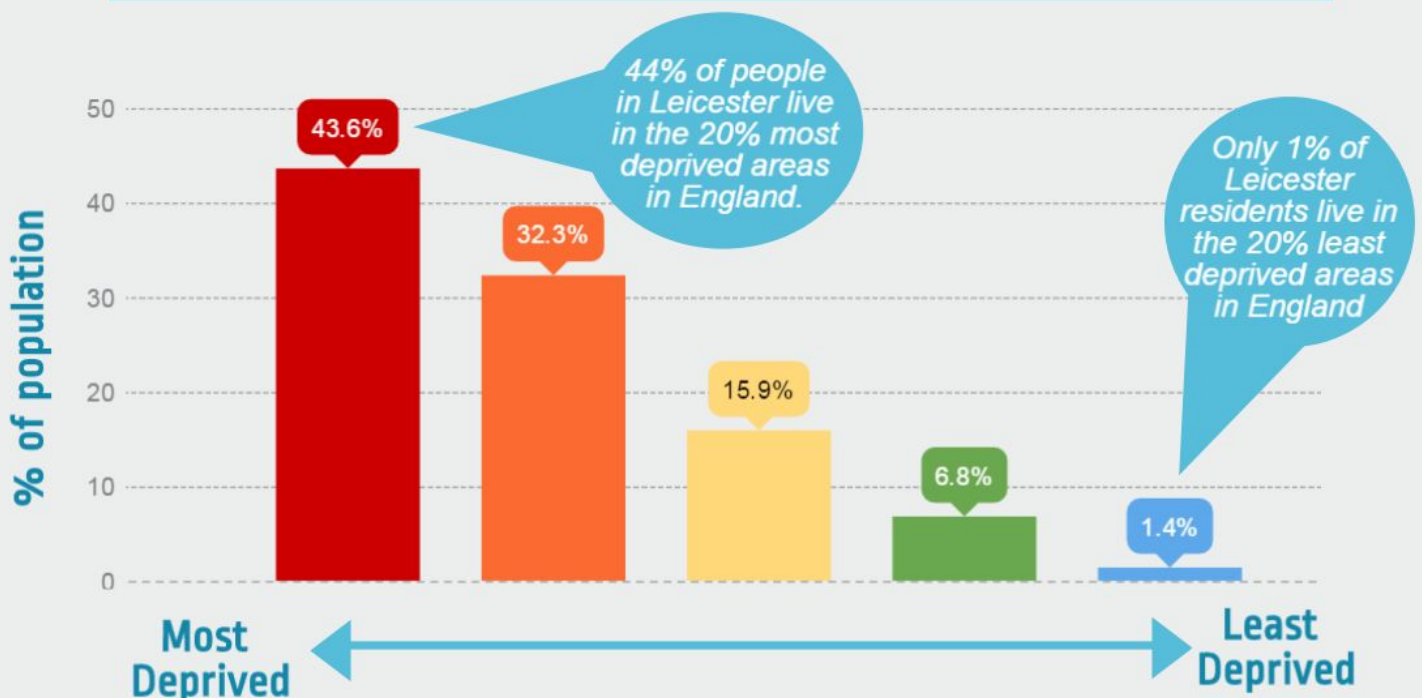
STEP 2

GEOGRAPHY:
32, 844 lower-layer super output areas in England are measured according to deprivation. This allows for comparison of the 192 small areas in Leicester with England.

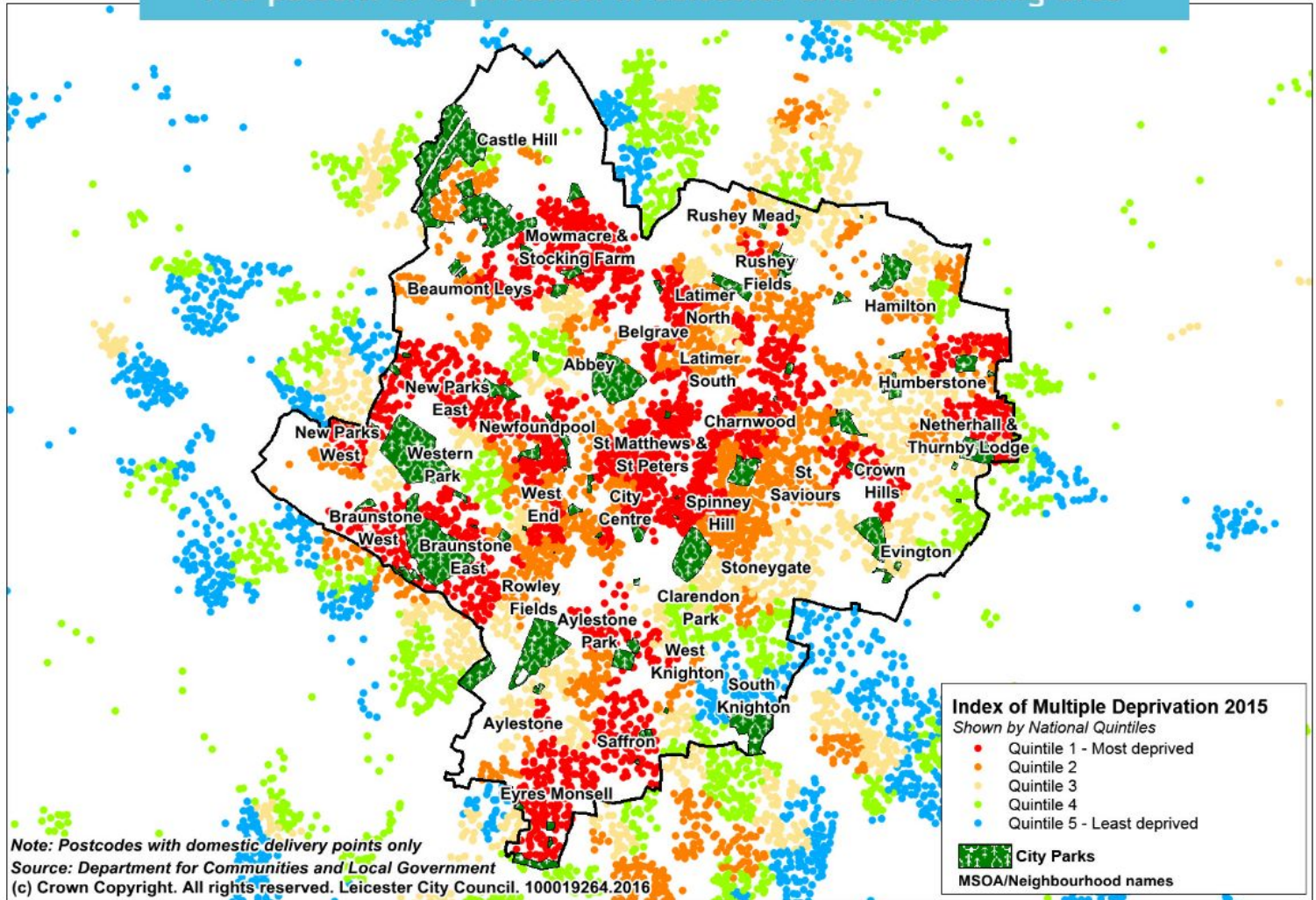
STEP 3

RESULT:
The data are combined as an Index of Multiple Deprivation (IMD). Individual domain data as well as income deprivation affecting older people and children are also reported.

A higher proportion of people live in deprived areas in Leicester



The pattern of deprivation in Leicester and surrounding area



Deprivation by domain



1 in 4 Leicester residents live in areas of high deprivation (the 10% most deprived in England).



1 in 4 children live in areas of high income deprivation.



1 in 3 older people live in areas of high income deprivation.



1 in 6 residents live in areas of high health deprivation, with higher rates of illness, disability & early death.



1 in 4 residents live in areas of high crime deprivation.



1 in 3 people (children, young people and adults) live in areas of high education deprivation.

For further information and findings: <https://www.gov.uk/government/statistics/english-indices-of-deprivation-2015>